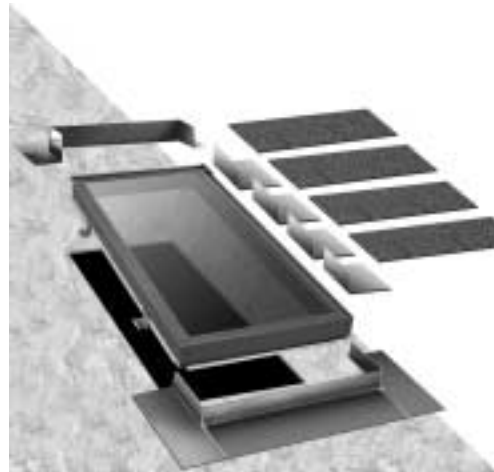


# THE QUICKEST, SIMPLEST INSTALLING SELF-FLASHED SKYLIGHT ON THE MARKET!

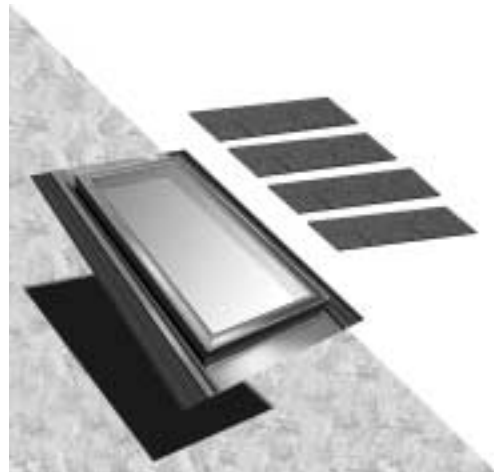


## VELUX OFFERS YOU THE INSTALLATION METHOD YOU PREFER



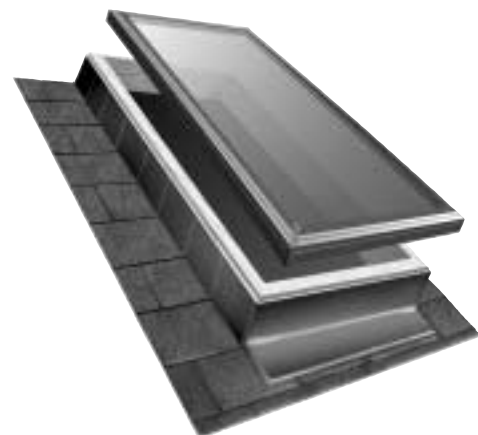
### DECK MOUNTED

As the world standard for over 60 years, VELUX deck mounted skylights, coupled with VELUX step flashing kits, offer you the best, most watertight installation method available. Great for all climatic regions of the United States, deck mounted skylights are particularly well suited for areas where ice, snow and freezing rain are prevalent. VELUX deck mounted skylights are the only skylights available for combi applications. Deck mounted skylights combine an insulating glass lens, a wood frame and protective cladding into one unit that is mounted directly to the roof deck. Flashing kits are available for most roofing materials like asphalt shingles, metal roofing and tile. Blinds and controls and copper cladding are also available.



### SELF-FLASHED

Developed for fast and reliably weathertight installations, VELUX self-flashed skylights are similar to the deck mounted skylights except they include a factory-installed flashing system designed for shingle roofs only. Blinds and controls are available. Copper cladding is not available.



### CURB MOUNTED

Designed to be used where a site-built curb is the preferred method of installation, curb mounted skylights consist of an insulating glass lens sealed into a protective metal frame designed to mount on top of a site-built curb. Flashing is installed around the site-built curb, then the skylight is mounted onto the flashed curb and fastened into place. Blinds and controls are available.

## SELF-FLASHED MODELS AVAILABLE



MODEL QVE

### ELECTRIC VENTING

Not only does the Model QVE venting electric skylight bring abundant natural light into your home, but with the touch of a button, it opens to let fresh air in, making this the ultimate Q series skylight. As stale, humid air is released, your home will feel comfortable anytime day or night.

- Opens and closes quickly and quietly from anywhere in the room.
- Slimline remote.

- Comes with a pre-installed concealed motor, control system and two rain sensors.
- Pre-wired for two sunscreening blinds (see page 7).
- Installs using a single hard wire that connects into a standard junction box.
- Comes with a select wood frame and sash, insect screen (pre-installed), and aluminum cladding.
- Choice of Comfort™ or ComfortPlus™ insulated glass.



MODEL QVM

### MANUAL VENTING

With a VELUX Model QVM venting manual skylight, any home can embrace the best of what nature has to offer. Opening for maximum fresh air, the QVM contributes to a home's proper moisture balance and comfort level by allowing stale, humid air to be released. This is an especially important feature for installations in kitchens, baths, laundry rooms, and pool enclosures.

- Easily opened and closed manually with VELUX control rods when out of reach.

- Smooth-turning handle is available when the skylight is installed within reach.
- Blinds and rods are available (see page 7).
- Comes with a select wood frame and sash, insect screen, and aluminum cladding.
- Choice of Comfort™ or ComfortPlus™ insulated glass.



MODEL QFS

### FIXED

The Model QFS fixed skylight is perfect for visually expanding areas such as hallways, stairwells, and other closed-in, dark spaces that can be transformed with light and sky views. The QFS provides an economical alternative in creating a spacious home that is filled with natural light.

- Comes with a wood frame, gasketing to drain any condensation outside, and protective aluminum cladding.
- Streamlined exterior – smooth, low profile does not obstruct your roofline.
- Blinds are available (see page 7).
- Choice of Comfort™ or ComfortPlus™ insulated glass.

# SELF-FLASHED SKYLIGHT FEATURES

Flashing system combines two proven roofing materials in a revolutionary design.

1. Exposed surfaces are Kynar 500 coated aluminum providing long-lasting protection against stormy weather and the sun's harmful UV rays.
2. Side flashing is a unique formula of EPDM that has a proven track record of more than 30 years in some of the harshest waterproofing applications – from flat, exposed roofs to the bottom of landscaping ponds.

Designed for asphalt shingle roofs only with a 15°-60° pitch



### Integrated Drainage Channels

**Efficient Drainage** – The unique design of our flashing system forces water around and away from the skylight, ensuring long-term weather-tightness.

**Quadruple Protection** – We have proven that even in hurricane type situations, water cannot be pushed past our four drainage channels that safely deliver any water back out on top of the shingles below.



1 2 3 4  
Drainage Channels

### Flexible EPDM Side Flashing

- Self-seals around nail penetrations.
- Long lasting stability and elasticity over an extremely broad temperature range.
- Eliminates the need for messy sealants that eventually break down and can prevent proper water drainage.



### Integrated Gaskets

**Energy Efficient** – The pre-installed gaskets along the bottom of the frame create a tight connection to the roof deck and ensure some of the best energy values in the industry.

**Condensation Protection** – Other gaskets inside the unit are designed to catch any condensation and deliver it out onto the roof.

### VELUX Comfort Glass

- Protection from solar heat gain or loss.
- Resists condensation twice as long as clear glass.
- Protects interiors from the sun's fade-causing rays.



### 8" Top Flashing

Longer than any other self-flashing skylight – extra protection in even the stormiest conditions.

### Side Flashing is Over 6"

Wider than any other self-flashing skylight.

### Integrated Brackets

**Quick Mounting** – The pre-installed brackets eliminate the cumbersome task of positioning brackets onto the skylight, as required by many other self-flashed skylights.

**Secure Connection** – The patent pending bracket design provides the correct angle for the ring-shank nails provided to be driven securely into framing members.



### Positioning Blocks

**Quick Aligning** – The positioning blocks allow the unit to be properly aligned in the opening from on the roof.



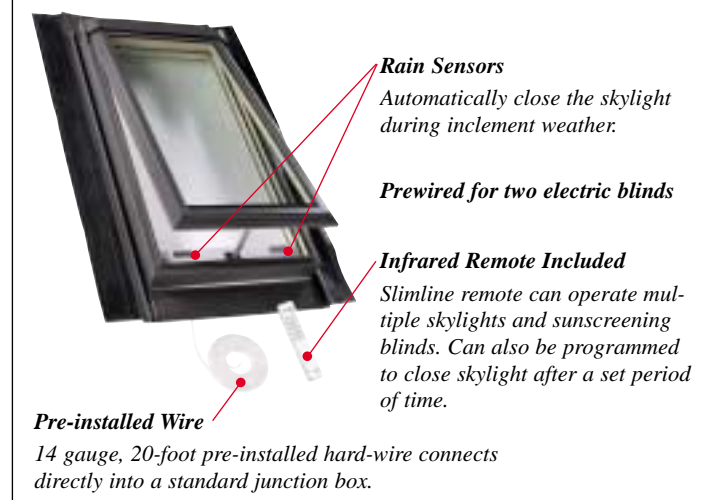
### Maintenance Free Exterior

The skylight's cladding is made of aluminum with a Kynar 500 paint finish that prevents fading, chipping, or cracking – even in harsh ocean climates.

### 20/10 Year Warranty

Installed without sealants or mastics that can break down over time, the skylight's 20/10 year warranty guarantees no leaks.

## MODEL QVE – ELECTRIC VENTING SKYLIGHT



### Rain Sensors

Automatically close the skylight during inclement weather.

### Pre-wired for two electric blinds

### Infrared Remote Included

Slimline remote can operate multiple skylights and sunscreening blinds. Can also be programmed to close skylight after a set period of time.

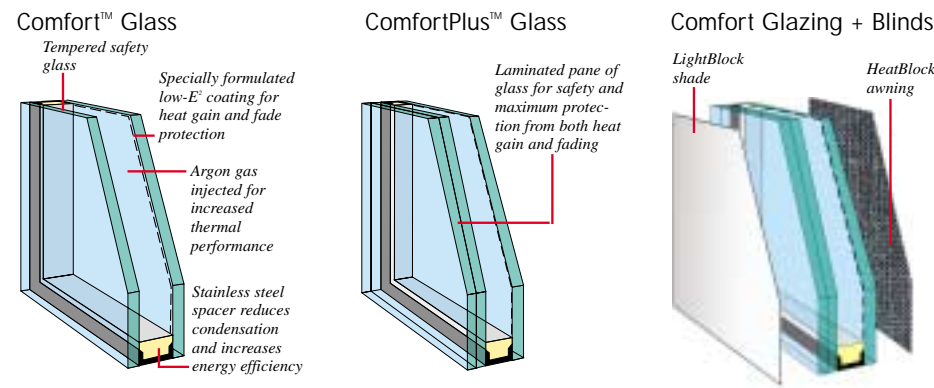
### Pre-installed Wire

14 gauge, 20-foot pre-installed hard-wire connects directly into a standard junction box.

## WHY VELUX?

With the use of the complete system, you will be able to control the light and heat gain to the level where you are comfortable. VELUX Comfort™ and ComfortPlus™ glazings offer:

- Three times more protection against solar heat gain.
- Resists condensation twice as long as clear glass.
- Protects interiors by reflecting the vast majority of the sun's fade-causing rays.



## ENERGY EFFICIENCY

VELUX is leading the industry by being the only manufacturer with all standard skylights meeting ENERGY STAR® approval guidelines for all climatic regions of the US. By choosing VELUX, you can promote energy efficiency and save money on utility bills – all while making your home brighter and more comfortable.



## THE VELUX PROMISE

When you decide to use VELUX roof windows or skylights, you are assured that our dedication to providing exemplary products and services will not end with the completion of that project. Or the next. We stand behind our products with a promise of lasting service. Our warranty covers 20 years on the insulated glass seal, 10 years on the skylight or roof window and 5 years on blinds, controls and electronics.

## IMPACT GLASS – APPROVED FOR USE IN ALL WIND ZONES

This specially designed skylight meets the requirements for wind-borne debris protection of the IBC (International Building Code, Commercial), IRC (International Residential Code), and the Florida Building Code 2001. Tested in accordance with the referenced ASTM standards, ASTM E-1886 and ASTM E-1996-02.



Call for price and availability on models and sizes that meet impact codes for hurricane prone areas, including wind zone 4.

## CONTROL THE LIGHT IN YOUR ROOM



The QVE is already pre-equipped with a control system for two electrical blinds. For the fixed QFS, additional electric controls are available as well as rods for manual blinds (QFS, QVM).

### CELLULAR SHADE

- Diffuse the light and reduce the UV fading.
- Increase energy efficiency up to 16%.
- Manual or electric.



### LIGHTBLOCK™ SHADE

- Perfect for room darkening.
- Increase energy efficiency up to 20%.
- Electric controls raise or lower the shade at the touch of a button.



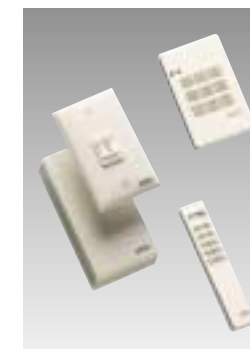
### VENETIAN BLIND

- Optimal glare and light control to direct the light where you want.
- Increase energy efficiency up to 12%.
- Manual or electric.



### ELECTRIC CONTROLS

- Available for one or multiple blinds.
- Extra keypads or infrared remotes can be added.
- Manual telescopic 6' - 10' rods and extensions available.



### EXTERIOR HEATBLOCK™ AWNING

- Fits QVE, electric venting skylights only.
- Best possible control of the heat gain; reduce the solar heat gain up to 40% more than the already energy efficient Comfort glazing.
- Allows view to the exterior.
- Electric only.



# PRODUCT DATA



To assist you in your planning, this chart provides the data useful for specification and installation of your VELUX self-flashed skylights.

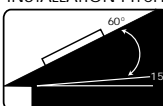
Q Series	For Asphalt Shingles Only		150	156	302	306	656
Outside frame	(w x h)	in. mm	23 <sup>5</sup> / <sub>16</sub> x 23 <sup>1</sup> / <sub>2</sub> (592 x 599)	23 <sup>5</sup> / <sub>16</sub> x 46 <sup>1</sup> / <sub>2</sub> (592 x 1178)	30 <sup>5</sup> / <sub>8</sub> x 30 <sup>5</sup> / <sub>8</sub> (778 x 778)	30 <sup>5</sup> / <sub>8</sub> x 46 <sup>3</sup> / <sub>8</sub> (778 x 1178)	47 <sup>5</sup> / <sub>16</sub> x 46 <sup>3</sup> / <sub>8</sub> (1202 x 1178)
Rough opening/ Finished framing	(w x h)	in. mm	22 <sup>1</sup> / <sub>2</sub> x 22 <sup>1</sup> / <sub>2</sub> (572 x 572)	22 <sup>1</sup> / <sub>2</sub> x 45 <sup>5</sup> / <sub>16</sub> (572 x 1150)	29 <sup>3</sup> / <sub>4</sub> x 29 <sup>3</sup> / <sub>4</sub> (756 x 751)	29 <sup>3</sup> / <sub>4</sub> x 45 <sup>5</sup> / <sub>16</sub> (756 x 1150)	46 <sup>1</sup> / <sub>2</sub> x 45 <sup>5</sup> / <sub>16</sub> (1181 x 1150)
Models QVM and QVE Only							
Daylight area (glass)	(w x h)	in.	18 <sup>1</sup> / <sub>2</sub> x 16 <sup>7</sup> / <sub>8</sub>	18 <sup>1</sup> / <sub>2</sub> x 39 <sup>3</sup> / <sub>4</sub>	25 <sup>7</sup> / <sub>8</sub> x 24	25 <sup>7</sup> / <sub>8</sub> x 39 <sup>3</sup> / <sub>4</sub>	41 <sup>1</sup> / <sub>2</sub> x 39 <sup>3</sup> / <sub>4</sub>
Daylight area		sq. ft.	2.16	5.11	4.31	7.10	11.73
Ventilation area (opening)		sq. ft.	1.30	2.17	3.40	4.77	5.70
Net weight (with temp. glass)		lbs.	49	63	40	73	115
Model QFS Only							
Daylight area (glass)	(w x h)	in.	19 <sup>15</sup> / <sub>16</sub> x 20 <sup>1</sup> / <sub>8</sub>	19 <sup>15</sup> / <sub>16</sub> x 42 <sup>5</sup> / <sub>16</sub>	28 <sup>1</sup> / <sub>2</sub> x 29 <sup>1</sup> / <sub>4</sub>	27 <sup>1</sup> / <sub>4</sub> x 42 <sup>15</sup> / <sub>16</sub>	41 <sup>3</sup> / <sub>8</sub> x 42 <sup>15</sup> / <sub>16</sub>
Daylight area		sq. ft.	2.78	5.94	5.32	8.12	12.35
Net weight (with temp. glass)		lbs.	29	48	34	53	95

Blinds		
MODEL QVE		
ACCESSORY	PRODUCT CODE	COLOR
LightBlock Shades	DMA Electric	1025 - White
Cellular Shades	FMA Electric	1040 - White Translucent
Venetian Blinds	PMA Electric	9150 - Eggshell White
Exterior HeatBlock Awning	MMA Electric	5060 - Charcoal
MODEL QVM		
ACCESSORY	PRODUCT CODE	COLOR
Cellular Shades	FDA Manual	1040 - White Translucent
Venetian Blinds	PDA Manual	9150 - Eggshell White
MODEL QFS		
ACCESSORY	PRODUCT CODE	COLOR
LightBlock Shades	DMF Electric	1025 - White
Cellular Shades	FFF Manual FMF Electric	1040 - White Translucent 1040 - White Translucent
Venetian Blinds	PFF Manual PMF Electric	9150 - Eggshell White 9150 - Eggshell White
Roller Shades	RAF Manual	1081 - Opaque Beige

Controls	
MODEL QVE	
ACCESSORY	PRODUCT CODE
Keypad, Wall Mounted (Optional)	WLI 160
Infrared Remote Control (Included in QVE) (Optional)	WLR 160
MODELS QVM AND QFS	
MANUAL ACCESSORY	PRODUCT CODE
Manual Rod, 6' - 10' Telescopic	ZCT 300
Motorized Rod, 6' - 10' Telescopic	ZMT 300
Extension, 3' to ZCT 300 and ZMT 300	ZCT 100
MODEL QVM	
MANUAL ACCESSORY	PRODUCT CODE
Skylight Replacement Hook	ZOZ 031
Crank Handle	ZZZ 169
MODEL QFS	
ELECTRIC ACCESSORY	PRODUCT CODE
Power Supply, for 3 Electric Blinds	WLC 160
Keypad, Wall Mounted, for Power Supply WLC 160 (Required)	WLI 160
Infrared Remote Control, for Electric Blind (Optional)	WLR 160
Power Supply and Keypad, for 1 Electric Blind	KES 160
MANUAL ACCESSORY	PRODUCT CODE
Cord Pulley, for Roller Shades	ZAZ 090



INSTALLATION PITCH



VELUX America Inc.  
 450 Old Brickyard Road  
 PO Box 5001  
 Greenwood, SC 29648-5001  
 Phone: 1-800-888-3589  
 Fax: 1-864-943-2631  
 Internet: <http://www.VELUXUSA.com>

