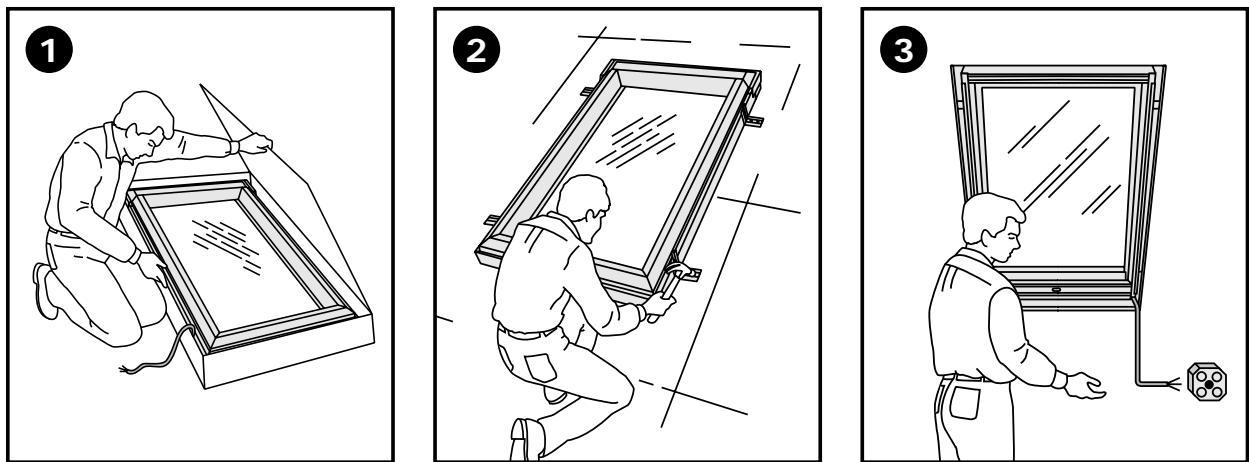


Step by step, we've eliminated the hassles of installing electric skylights.



The VSE™ As easy as it gets. One wire. One box. One purchase.

- **One Wire:** The VSE™ installs using a single, hard-wire connection. So you'll never have to deal with awkward, multiple-step wiring systems again. The 14 gauge, 20 ft. pre-installed wire easily connects into a standard junction box – making installation simpler than ever before.
- **One Box:** The VSE comes ready to install right out of the box. Every VSE comes with a concealed motor and control system, remote and two rain sensors pre-installed. To top it off, every VSE is also pre-wired for electrical accessories, so adding blinds is a snap.
- **One Purchase:** Having to order multiple components for a “simple” skylight installation is now a thing of the past. In fact, ordering and assembling an electric venting skylight has never been easier. The VSE Electric Venting Skylight from VELUX® comes pre-assembled and ready to install right out of the box. All you have to do is make one call to your retailer. It's that simple.

THE OPTIMAL SKYLIGHT SYSTEM FOR CONVENIENT CONTROL OF VENTILATION, HEAT GAIN AND LIGHT CONTROL IN THE ROOM

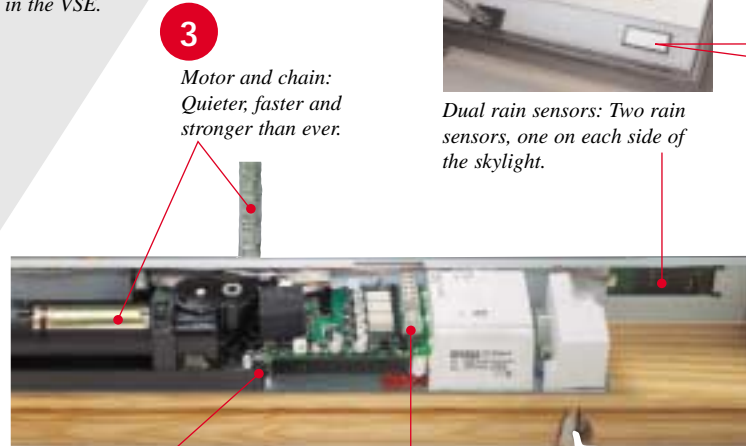
7 UNIQUE BENEFITS AND FEATURES OF THE VSE™ The platform for better comfort in your room

7 EXTERIOR HEAT CONTROL Awning Blind

Reduces heat gain up to 40% more than the already energy efficient comfort glazing.



Ready to plug in the VSE.



Remote sensor: Infrared remote allows operation of the skylight and two blinds from virtually anywhere in the room.

1 Pre-wired for two blinds: With no additional wiring required, adding blinds is simple, and both interior and exterior blinds can be operated by the VSE remote.

One wire: One hard-wire connection for easy installation.

3 Motor and chain: Quieter, faster and stronger than ever.

4 Rain sensors: Automatically close the skylight during inclement weather to provide complete protection from the elements.



Dual rain sensors: Two rain sensors, one on each side of the skylight.

5 Hammer tab brackets: Make installation faster and easier.



Robust chain operator: Stronger, quieter mechanism opens further than ever before (up to 5" on some models).

2 Infrared remote control: Slimline remote can operate multiple skylights and sunscreening blinds. Can also be programmed to close skylights after a set time period.

6 Pre-installed wire: 14 gauge, 20-foot pre-installed hard-wire connects directly into a standard junction box.

Concealed motor and control system: The motor and control system are built into the frame, providing an improved interior aesthetic.

- 1 PREWIRED FOR 2 BLINDS
- 2 INFRARED REMOTE
- 3 QUIET, STRONG OPENER
- 4 2 RAIN SENSORS
- 5 PREINSTALLED BRACKETS
- 6 PREINSTALLED 20 FT. WIRE
- 7 FULL BLIND PROGRAM

7 INTERIOR LIGHT CONTROL • Venetian Blind • LightBlock™ Shade • Cellular Shade



Increase energy efficiency up to 20% more than the already energy efficient comfort glazing.

Ready to plug in the VSE.

Optional extra wall-mounted key pad and interface to additional sensors can be added for optimal control of the VSE.

Visit www.VELUXUSA.com for more information on glazing options, flashing systems, and blinds and controls available for the VSE.

PRODUCT DATA

To assist you in your planning, these charts provide the data useful for specification and installation of your VELUX VSE.

Models VSE		101	104	106	108	304	306	308	601	606
Outside frame	(w x h) in. mm	21½ x 27½ (548 x 699)	21½ x 38½ (548 x 978)	21½ x 46½ (548 x 1178)	21½ x 55 (548 x 1398)	30½ x 38½ (778 x 978)	30½ x 46½ (778 x 1178)	30½ x 55 (778 x 1398)	44¾ x 27½ (1138 x 699)	44¾ x 46¾ (1138 x 1178)
Finished frame dimension	(w x h) in. mm	20½ x 26½ (521 x 667)	20½ x 37½ (521 x 945)	20½ x 45½ (521 x 1145)	20½ x 53½ (521 x 1365)	29½ x 37½ (751 x 945)	29½ x 45½ (751 x 1145)	29½ x 53½ (751 x 1365)	43¾ x 26½ (1111 x 667)	43¾ x 45½ (1111 x 1145)
Rough opening for EDL/EDW/EDM	(w x h) in. mm	21½ x 28 (548 x 711)	21½ x 39 (548 x 991)	21½ x 46½ (548 x 1191)	21½ x 55½ (548 x 1411)	30½ x 39 (775 x 991)	30½ x 46½ (775 x 1191)	30½ x 55½ (775 x 1411)	44¾ x 28 (1138 x 711)	44¾ x 46½ (1138 x 1191)
Rough opening for ECX Flat Roof Curb	(w x h) in. mm	21½ x 34½ (548 x 877)	21½ x 46½ (548 x 1172)	21½ x 54½ (548 x 1383)	21½ x 63½ (548 x 1615)	30½ x 46½ (775 x 1172)	30½ x 54½ (775 x 1383)	30½ x 63½ (775 x 1615)	44¾ x 34½ (1138 x 877)	44¾ x 54½ (1138 x 1383)
Rough opening for EMX Roof Curb	(w x h) in. mm	21½ x 30¾ (548 x 768)	21½ x 41¾ (548 x 1051)	21½ x 49¾ (548 x 1254)	21½ x 58¾ (548 x 1477)	30½ x 41¾ (775 x 1051)	30½ x 49¾ (775 x 1254)	30½ x 58¾ (775 x 1417)	44¾ x 30¾ (1138 x 767)	44¾ x 49¾ (1138 x 1254)
Daylight area (glass)	(w x h) in.	16¾ x 20¾ (548 x 699)	16¾ x 31¾ (548 x 978)	16¾ x 39¾ (548 x 1178)	16¾ x 48¾ (548 x 1398)	25¾ x 31¾ (775 x 991)	25¾ x 39¾ (775 x 1191)	25¾ x 48¾ (775 x 1411)	40 x 20¾ (1138 x 711)	40 x 39¾ (1138 x 1191)
Daylight area	sq. ft.	2.4	3.7	4.6	5.6	5.7	7.1	8.7	5.8	11
Ventilation area (opening)	sq. ft.	1.08	3.58	4.11	4.17	4.24	4.77	5.33	1.73	5.76
Net weight (with temp. glass)	lbs.	39	49	56	63	61	70	80	67	94

Note: Impact VSE should be specified as Type 0099 69.

The following blinds and shades are available for all sizes of the VSE:

Blinds and Shades		
ACCESSORY	PRODUCT CODE	COLOR
Lightblock™ Shades	DMA Electric	1025 - White
Cellular Shades	FMA Electric	1040 - Translucent White
Venetian Blinds	PMA Electric	9150 - Eggshell White
Awning	MMA Electric	5060 - Charcoal

The following flashings are available for all sizes of the VSE:

Flashing Systems
EDL* Step Flashing (Roof Pitch 15° - 85°)
EDL Copper Step Flashing
ZZZ 165 Additional Step Flashing Pieces
EDW™ High Profile Flashing (Roof Pitch 15° - 85°)
EDM™ Metal Roof Flashing (Roof Pitch 15° - 85°)
ECX* Roof Curb (Roof Pitch 0° - 10°)
EMX™ Roof Curb (Roof Pitch 10° - 15°)
ZOZ 121 Roofing Underlayment

©VELUX, VELUX logo, EDL, ECX are registered trademarks.

™ EDW, EDM, EMX, VSE, Comfort, ComfortPlus, HeatBlock, LightBlock are trademarks of VELUX GROUP.

Printed in U.S.A.



VELUX America Inc.
450 Old Brickyard Road
PO Box 5001
Greenwood, SC 29648-5001
Phone: 1-800-888-3589
Fax: 1-864-943-2631
Internet: <http://www.VELUXUSA.com>



V.USA:2056-0403
©2003 VELUX GROUP

PRODUCT TESTING

CODE COMPLIANCE

VELUX VSE meets the general requirements of all model building codes including the Standard Building Code (SBCCI), International One and Two Family Dwelling Code, Uniform Building Code (ICBO), and National Building Code (BOCA). (See NES Evaluation Report NER-216.) In addition, all VELUX electrical components are UL/CSA approved.

MODEL VSE TEST RESULTS

AIR INFILTRATION*		
1.57 psf (25 mph)	75 Pa (40 km/h)	
0.17 cfm/ft ²	0.86 l/s/m ²	
WATER RESISTANCE*		
2.86 psf (33 mph) @ 5 US gal/ft ² /h	140 Pa (53 km/h) @ 3.4 l/m ² /min	
No Entry	No Entry	
THERMAL PERFORMANCE (Complete unit values.) All thermal performance SHGC, Vt values for VELUX Skylights are NFRC certified, labeled and listed in the NFRC Product Directory. (In accordance with NFRC procedures.)		
GLASS	Comfort (75) Tempered, Low-E ² , Argon Gas-filled	ComfortPlus (74) Laminated, Low-E ² , Argon Gas-filled
U-Factor (R-Factor)	0.38 (2.6)	0.40 (2.5)
SHGC	0.28	0.28
Vt	0.43	0.42
FADING PROTECTION %		
GLAZING	CLASSICAL UV PROTECTION %	TOTAL FADING PROTECTION %
Comfort (75)	87%	75%
ComfortPlus (74)	99.9%	83%
STRUCTURAL PERFORMANCE**		
	DOWNWARD LOAD	WIND UPLIFT
Laminated, Heat-Strengthened	12.75 (psf)	22.96 (psf)
Laminated, Tempered	108-182 (psf)	22.96 (psf)

* Tested in accordance with AAMA/WDMA 1600/IS7 2000, VOLUNTARY SPECIFICATION FOR SKYLIGHTS. Size 606 unit tested at a 15° roof pitch.

** See National Evaluation Service Report No. NER 216 and ICBO/ES Report ER-6075. Model VSE is WDMA Hallmark certified. See Hallmark Report No. 426.